

ARIZZI

ARIZZI

Made in Italy/Toscana



Tradition and craftsmanship are the expression of our skillness; care and devotion together with a strict research are finalized to projects' creation with a refined aesthetic sense. Arizzi has been working in the contract branch since many years ago; the company, thanks to an experience made in the creation of lighting products both in Italy and abroad, was able to follow the trend of a changeable market. Colours and transparency of glasses work in complete symbiosis with totally malleable materials like brass and iron becoming unique shapes which embrace the care and the experience of craftsmanship.

Espressione delle proprie capacità nel segno della tradizione e dell'artigianalità, la cura e la dedizione per cose preziose affiancate ad una ricerca attenta e puntuale, finalizzata alla realizzazione di progetti dal raffinato senso estetico. Da anni nel settore contract Arizzi ha saputo segnare il passo grazie all'esperienza maturata nella creazione di articoli di illuminazione in campo nazionale ed estero. I colori e la trasparenza del vetro in completa simbiosi con materiali plasmabili quali ottone e ferro divengono forme uniche che racchiudono l'esperienza e la cura di maestri artigiani.

Collections 09



www.arizzi.it

Elegance and technology

Eleganza e tecnologia



A passion since ever, for the form, elegance, creativity and innovation.

From this research comes out a history made of new technologies enforced to an ancient art.

A meeting between artisan skill and modern technologies where it rises Arizzi's personality, inspired by values of the past and by concepts of the futures.

Una passione da sempre, per la forma, l'eleganza, la creatività e l'innovazione.

Da questa ricerca nasce una storia fatta di nuove tecnologie applicate ad un'arte antica.

Un incontro tra abilità artigiana e moderna tecnologia, dove emerge la personalità di ARIZZI, ispirata da valori del passato e supportata da concetti del futuro.



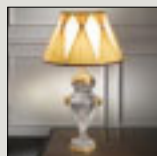
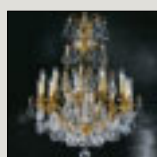
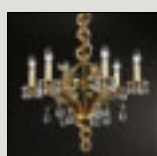
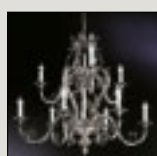


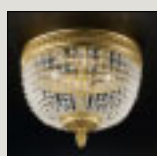
Table lamps/Lampade da tavolo

pag. **5**

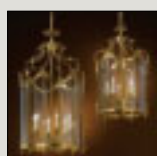
Wall lights/Appiques

pag. **25**Brass chandeliers with Bohemian crystals
Lampadari in ottone con cristalli di Bohemiapag. **45**Iron chandeliers with crystals
Lampadari in ferro con cristallipag. **63**

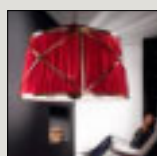
English style chandeliers/Lampadari in stile inglese

pag. **75**

Ceiling fittings/Plafoniere

pag. **97**

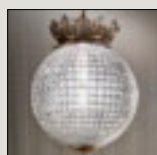
Lanterns/Lanterne

pag. **105**

Soft light

pag. **121**

Outdoor Lanterns

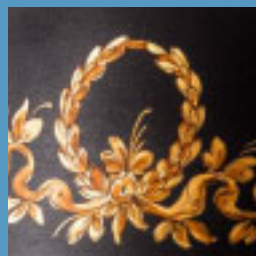
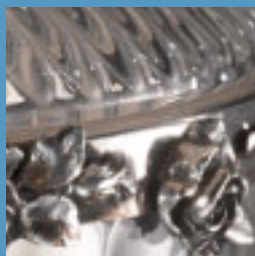
pag. **127**

Special works/Lavori speciali

pag. **133**

Table lamps

Lampade da tavolo

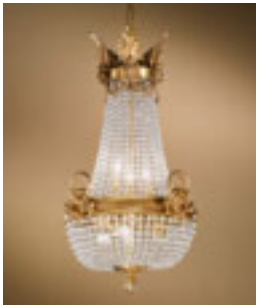




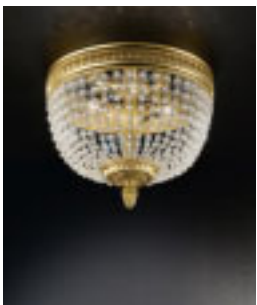
152/2/AP pag. 31



152/8+4 pag. 58



152/3+3 pag. 60



152/4/PL pag. 99

**152/3/L**

H 88 – D 45
3X60W E14

Cast brass table lamp,
finished in antique silver
plate with crystal and black
Portoro marble.

Lampada da tavolo in ottone,
finitura argento fiorentino
invecchiato con cristallo e base
in marmo nero Portoro.

**1885/1/L**

H 86 – D 50

1X100W E27

Cast brass table lamp,
finished in antique french
gold with hand cut crystal
and ivory plissé fabric shade.

Lampada da tavolo in ottone,
finitura oro francese invecchiato
con cristallo molato a mano e
paralume plissé avorio.





534/1/L

H 80 - D 50
1X100W E27

Cast brass table lamp,
finished in antique silver
plate with hand cut crystal
and black plissé fabric shade.

Lampada da tavolo in ottone,
finitura argento fiorentino
invecchiato con cristallo molato
a mano e paralume plissé nero.



1845/1/L

H 80 - D 50
1X100W E27

Cast brass table lamp,
finished in antique french
gold with hand cut crystal
and ivory fabric shade.

Lampada da tavolo in
ottone, finitura oro francese
invecchiato con cristallo molato
a mano e paralume avorio.



1805/3/AP pag. 32



1804/8 pag. 78

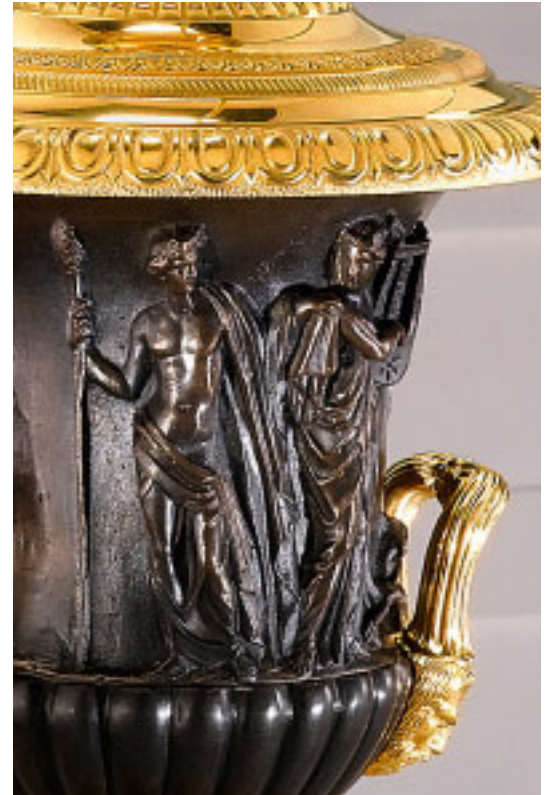


1806/1/L

H 81 – D 45
1X100W E27

Cast brass table lamp,
finished in antique french
gold with black Portoro
marble and ivory plissé
fabric shade.

Lampada da tavolo in ottone,
finitura oro francese invecchiato
con marmo nero Portoro e
paralume plissé avorio.

**533/1/L**

H 82 - D 36

1X100W E27

Cast brass table lamp, finished in mat dark bronze and antique french gold with square ivory fabric shade.

Lampada da tavolo in ottone, finitura brunito scuro opaco e oro francese invecchiato paralume quadrato avorio.

**528/5/L**

H 100 – D 50

5X60W E14

Cast brass table lamp, finished in mat dark bronze and antique french gold with ivory plissé fabric shade.

Lampada da tavolo in ottone, finitura brunito scuro opaco e oro francese invecchiato con paralume plissé avorio.



1133/1/L

H 57 - D 37

1X100W E27

Brass table lamp, finished in antique french gold with crystal and black plissé fabric shade.

Lampada da tavolo in ottone, finitura oro francese invecchiato con cristallo e paralume plissé nero.





420/1/L

H 70 – D 50

1X100W E27

Cast brass table lamp,
finished in antique french
gold with red Levanto
marble and white plissé
fabric shade.

Lampada da tavolo in
ottone finitura oro francese
invecchiato con marmo rosso
Levanto e paralume bianco
plissé.

**1801/3/L**

H 80 – D 42
3X60W E14

Cast brass table lamp,
finished in antique french
gold with red France marble
with hand decorated metal
shade.

Lampada da tavolo in ottone,
finitura oro francese
invecchiato con marmo rosso
Francia e ventola in metallo
decorata a mano.

**870/2/L**

H 65 – D 47
2X60W E14

Cast brass table lamp,
finished in antique french
gold with hand decorated
metal shade.

Lampada da tavolo in
ottone, finitura oro francese
invecchiato e ventola in metallo
decorata a mano.

148/3/L

H 82 – D 42

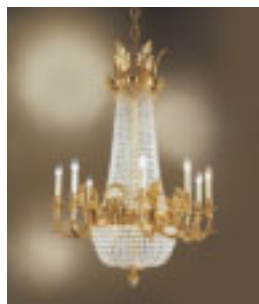
3X60W E14

Cast brass table lamp,
finished in antique french
gold with crystal and hand
decorated metal shade with
black Portoro marble.

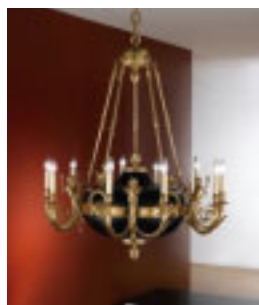
Lampada da tavolo in ottone,
finitura oro francese invecchiato con cristallo
e ventola in metallo decorata a mano
e marmo nero Portoro.



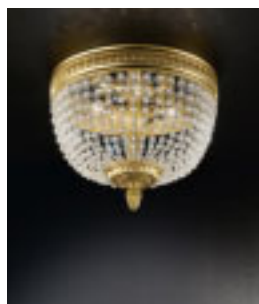
152/2/AP pag. 31



152/8+4 pag. 58



148/10 pag. 80



152/4/PL pag. 99

869/3/L

H 80 - D 42

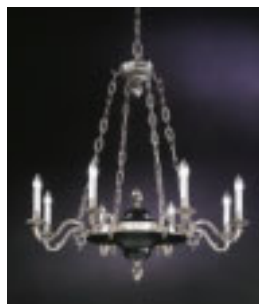
3X60W E14

Cast brass table lamp, finished in antique silver plate with hand decorated metal shade with black Portoro marble.

Lampada da tavolo in ottone, finitura argento fiorentino invecchiato con ventola in metallo decorata a mano con marmo nero Portoro.



869/3/AP pag. 33



869/8 pag. 82



869/12 pag. 83



**615/2/L**

H 62 - D 42

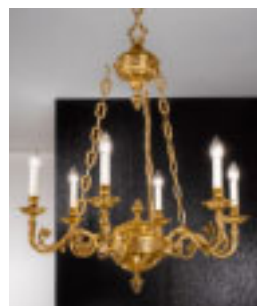
2X60W E14

Cast brass table lamp, finished in antique french gold with hand decorated metal shade with red France marble.

Lampada da tavolo in ottone, finitura oro francese invecchiato e ventola in metallo decorata a mano e marmo rosso Francia.



617/3/AP



619/6



618/6

pag. 37

pag. 88

pag. 89

616/3/T

H 182 - D 47
3X60W E14

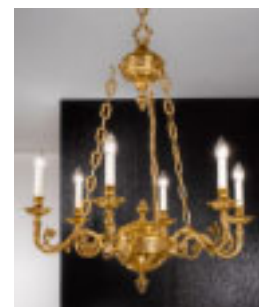
Cast brass floor lamp,
finished in antique french
gold with hand decorated
metal shade with red France
marble.

Lampada da terra in ottone,
finitura oro francese invecchiato
e ventola in metallo decorata a
mano e marmo rosso Francia.



617/3/AP

pag. 37



619/6

pag. 88



618/6

pag. 89



723/3/L

H 78 - D 42

3X60W E14

Cast brass table lamp,
finished in antique french
gold and ivory fabric shade.

Lampada da tavolo in ottone,
finitura oro francese invecchiato
con paralume avorio.



723/3/T

H 180 – D 52

3X60W E14

Cast brass floor lamp,
finished in antique french
gold and ivory fabric shade.

Lampada da terra in ottone
finitura in oro francese
invecchiato e paralume avorio.



410/1/L
H 71 – D 40
1X60W E14

410/1/T
H 140/160 teles. – D 50
1X75W E27



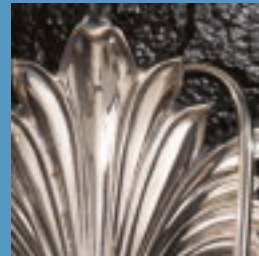
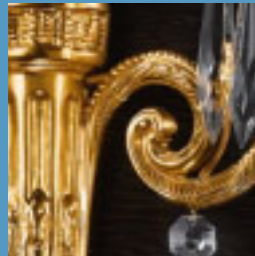
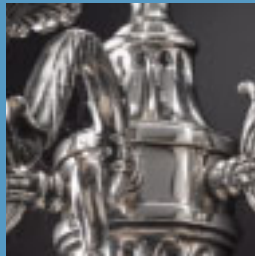
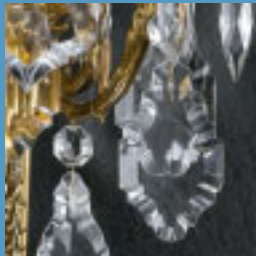
410/1/AP
H 35 – D 38
1X60W E14

Range of brass floor lamps, table lamps or wall brackets, finished in antique bronze and ivory fabric shade.

Serie coordinata di lampade da terra, lumi ed applique in ottone, finitura brunito vecchio con paralume avorio.

Wall lights

Appliques





28/15 pag. 50



28/8+4 pag. 51



28/8 pag. 52



28/6 pag. 53

83/5/G/CRY

H 70 – D 49

5X60W E14

Cast brass wall light, finished
in antique silver plate with
Bohemian crystals.

Applique in ottone, finitura
argento fiorentino invecchiato
con cristalli di Bohemia.



**83/3+2/CRY**

H 53 - D 35

5X60W E14

Cast brass wall light,
finished in antique french
gold with Bohemian crystals.

Applique in ottone, finitura oro
francese invecchiato con cristalli
di Bohemia.



28/15

pag. 50



28/8+4

pag. 51



28/8

pag. 52



28/6

pag. 53

83/3

H 53 – D 35

3X60W E14

Cast brass wall light, finished
in antique french gold.Applique in ottone, finitura oro
francese invecchiato.**83/3/CRY**

H 53 – D 35

3X60W E14

Cast brass wall light,
finished in antique french
gold with Bohemian crystals.Applique in ottone, finitura oro
francese invecchiato con cristalli
di Bohemia.

28/15

pag. 50



28/8+4

pag. 51



28/8

pag. 52



28/6

pag. 53

83/2

H 48 - D 27

2X60W E14

Cast brass wall light, finished
in antique french gold.Applique in ottone, finitura oro
francese invecchiato.

28/15

pag. 50



28/8+4

pag. 51



28/8

pag. 52



28/6

pag. 53

83/2/CRY

H 48 - D 27

2X60W E14

Cast brass wall light,
finished in antique french
gold with Bohemian crystals.Applique in ottone, finitura
oro francese invecchiato con
cristalli di Bohemia.

**172/2/AP**

H 33 - D 33

2X60W E14

Cast brass wall light, finished
in antique silver plate.Applique in ottone, finitura argento
fiorentino invecchiato.

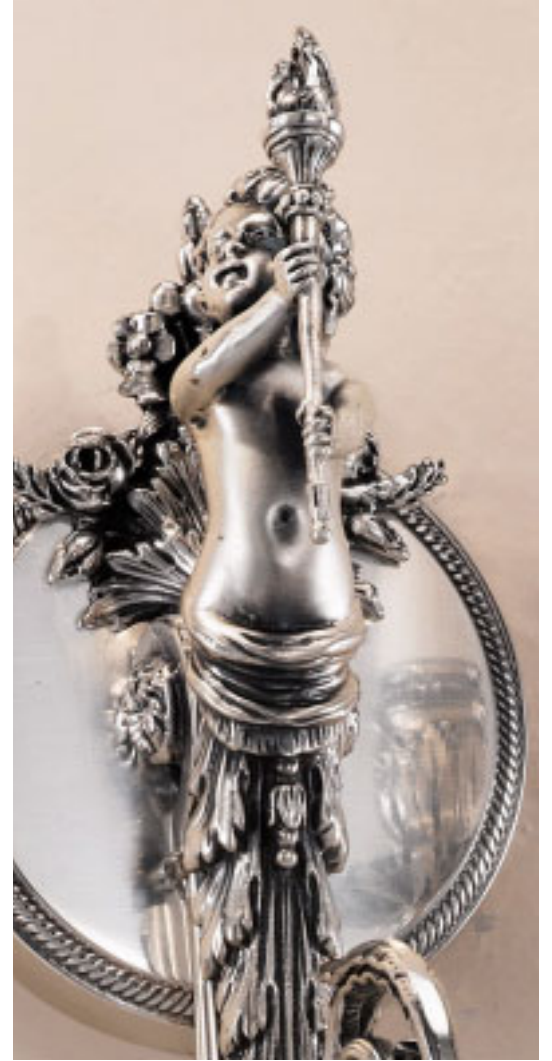
172/6+3



172/6

pag. 76

pag. 77



152/2/AP

H 40 - D 33
 2X60W E14
 Cast brass wall light,
 finished in antique silver
 plate.

Applique in ottone, finitura
 argento fiorentino invecchiato.



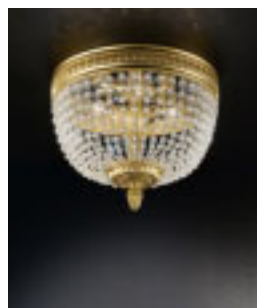
152/3/L pag. 6



152/8+4 pag. 58



152/3+3 pag. 60

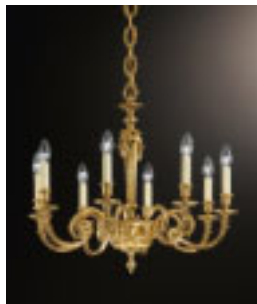


152/4/PL pag. 99



1806/1/L

pag. 11



1804/8

pag. 78

1805/3/AP

H 53 – D 35

3X60W E14

Cast brass wall light, finished
in antique french gold.Applique in ottone, finitura oro
francese invecchiato.**1805/2/AP**

H 53 – D 35

2X60W E14



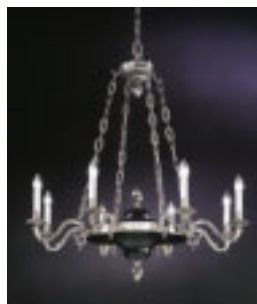
869/3/AP

H 70 - D 49

3X60W E14

Cast brass wall light, finished
in antique silver plate.Applique in ottone, finitura
argento fiorentino invecchiato.

869/3/L pag. 19



869/8 pag. 82



869/12 pag. 83



**CL47/2/AP**

H 33 – D 22

2X60W E14

Cast brass wall light, finished in antique french gold and green details.

Applique in ottone, finitura oro francese invecchiato con particolari verdi.



CL47/12

pag. 79

**495/2/AP**

H 25 – D 23
2X60W E14
Cast brass wall light, finished in oxidized antique bronze with ivory fabric shades.

Applique in ottone, finitura brunito vecchio ossidato con paralumi avorio.

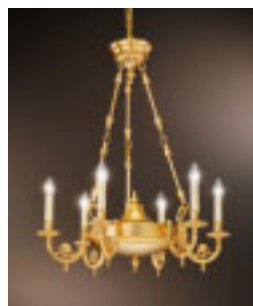
**495/1/AP**

H 25 – D 12
1X60W E14
Cast brass wall light, finished in satin gold plate with ivory fabric shade.

Applique in ottone, finitura bagno oro satinato con paralume avorio.



495/8



495/6

pag. 85

pag. 84



1790/8

pag. 86

1790/1/AP

H 27 - D 6

1X60W E14

Brass wall light, finished in antique french gold.

Applique in ottone, finitura oro francese invecchiato.



1790/6

pag. 87

1790/2/AP

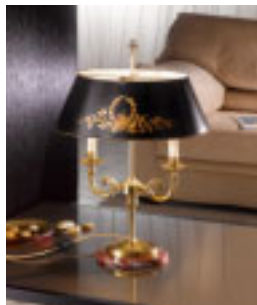
H 27 - D 30

2X60W E14

Brass wall light, finished in antique bronze.

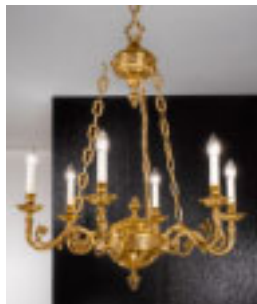
Applique in ottone, finitura brunito vecchio.





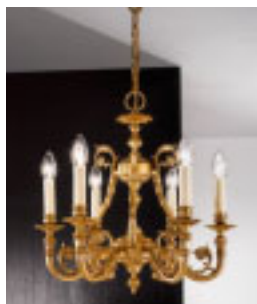
615/2/L

pag. 20



619/6

pag. 88



618/6

pag. 89



616/3/T

pag. 21

617/3/AP

H 50 - D 39

3X60W E14

Cast brass wall light, finished
in antique french gold.Applique in ottone, finitura oro
francese invecchiato.

**M321/2/AP**

H 38 – D 25
2X60W E14
Cast brass wall light, finished in antique french gold and mat black with organza black plissé fabric shade.

Applique in ottone, finitura oro francese invecchiato e nero opaco con paralumi in organza plissé nero.

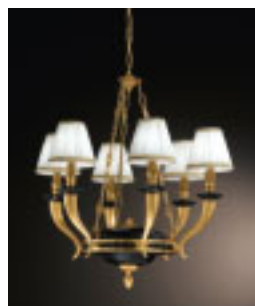


M321/6 pag. 91

**494/1/AP**

H 45 – D 15
1X60W E14
Brass wall light, finished in real gold and mat black with bobeches in black Marquinia marble and ivory fabric shade.

Applique in ottone, finitura in bagno oro e nero opaco con bobeches in marmo nero Marquinia con paralume avorio.



494/6 pag. 90

**84/2/AP**

H 44 - D 32

2X60W E14

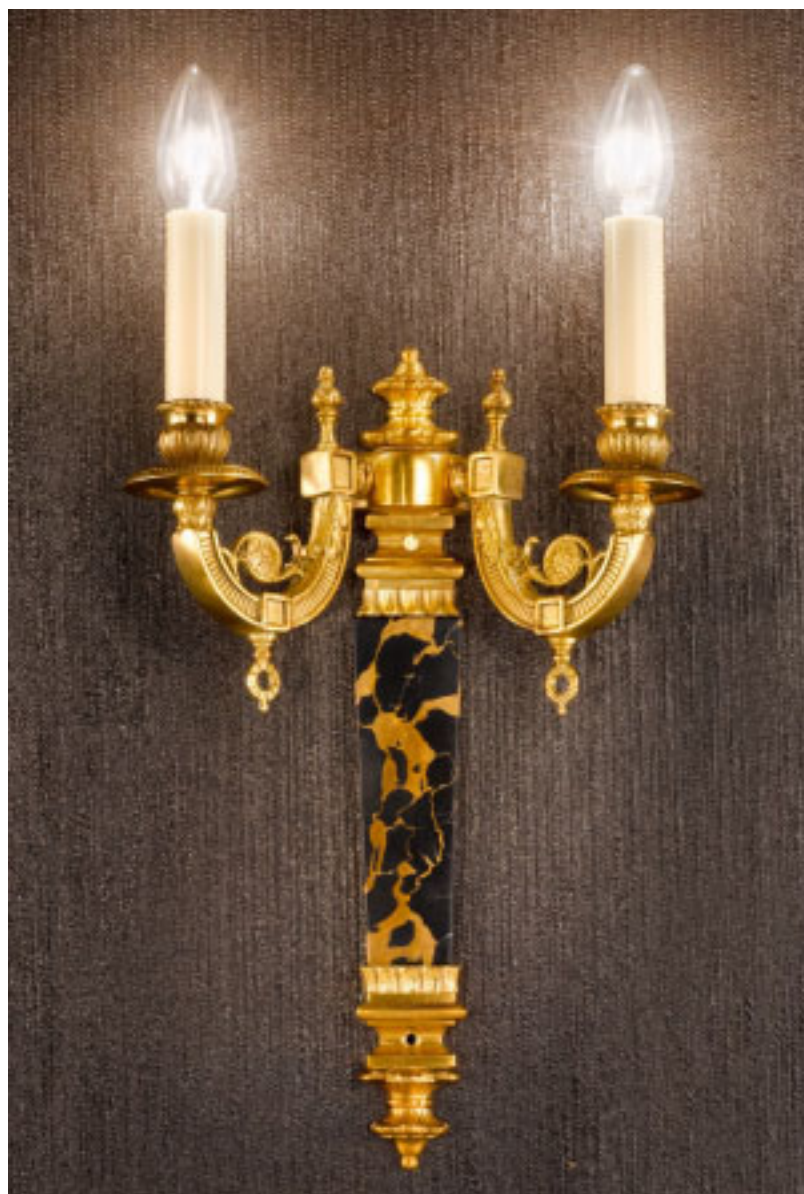
Cast brass wall light, finished
in antique french gold.

Applique in ottone, finitura oro
francese invecchiato.

84/3/AP

H 44 - D 32

3X60W E14

**509/2/AP**

H 46 - D 26

2X60W E14

Cast brass wall light, finished
in antique french gold with
black Portoro marble.

Applique in ottone, finitura oro
francese invecchiato con marmo
nero Portoro.



1846/6+3 pag. 92

1846/2/AP

H 26 – D 23

2X60W E14

Cast brass wall light, finished in antique french gold.

Applique in ottone, finitura oro francese invecchiato.



1846/8+4 pag. 93



1846/3/PL pag. 100

**1884/1/AP**

H 26 – D 10

1X60W E14

Cast brass wall light, finished in antique french gold.

Applique in ottone, finitura oro francese invecchiato.



1884/6+3 pag. 94



**76/2/AP**

H 41 – D 12

2X60W E14

Cast brass wall light, finished in antique silver plate with black Portoro marble.

Applique in ottone, finitura argento fiorentino invecchiato con marmo nero Portoro.

**536/2/AP**

H 35 – D 50

2X60W E14

Cast brass wall light, finished in antique silver plate.

Applique in ottone, finitura argento fiorentino invecchiato.

**419/2/AP**

H 26 – D 46
2X60W E14
Cast brass wall light,
finished in antique french
gold with satin crystals.

Applique in ottone, finitura
oro francese invecchiato con
cristalli satinati.

**164/2/AP**

H 24 – D 40
2X60W E14
Cast brass wall light, finished
in antique french gold with
ivory plissé fabric shades.

AApplique in ottone, finitura
oro francese invecchiato con
paralumi plissé avorio.

1921/2/LAV

L 65 – SP 22
2X60W E14
Cast brass picture light,
finished in satin real gold.

Applique in ottone da quadro,
finitura bagno oro satinato.



1920/2/LAV

L 55 – SP 22
2X60W E14

1920/2/LAV/SILV

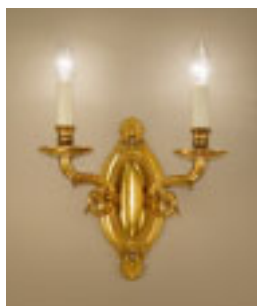
L 55 – SP 22
2X60W E14
Cast brass picture light,
finished in antique silver
plate.

Applique in ottone da quadro,
finitura argento fiorentino
invecchiato.

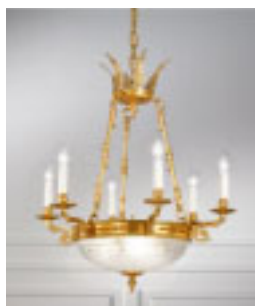


1921/2/LAV/SILV

L 65 – SP 22
2X60W E14



1846/2/AP



pag. 40 1846/6+3



pag. 92 1846/8+4



pag. 93 1846/3/PL pag. 100



1921/2/NI

L 53 – SP 22

2X60W E14

Cast brass pictures light,
finishes in polished nickel.

Applique da quadro in ottone,
finitura in nichel lucido.



1920/2/NI

L 43 – SP 22

2X60W E14

Cast brass pictures light,
finishes in polished nickel.

Applique da quadro in ottone,
finitura in nichel lucido.



804/4/MOD/NI pag. 118



12/4/G/NI pag. 119



228/4/G/S/NI pag. 120

Brass chandeliers with Bohemian crystals

Lampadari in ottone
con cristalli di Bohemia



16/15

H 95 – D 80
15X60W E14
Cast brass chandelier,
finished in antique bronze
with Bohemian crystals.

Lampadario in ottone, finitura
brunito vecchio con cristalli di
Bohemia.



**16/8**

H 90 – D 70

8X60W E14

Cast brass chandelier,
finished in antique french
gold with Bohemian crystals.

Lampadario in ottone, finitura
oro francese invecchiato con
cristalli di Boemia.

16/6

H 85 – D 55

6X60W E14

Cast brass chandelier,
finished in antique french
gold with Bohemian crystals.

Lampadario in ottone, finitura
oro francese invecchiato con
cristalli di Bohemia.





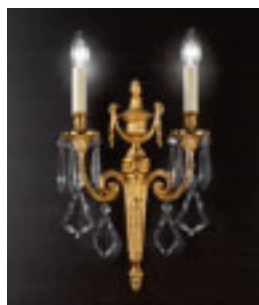
83/5/G/CRY pag. 26



83/3+2/CRY pag. 27



83/3/CRY pag. 28



83/2/CRY pag. 29

28/18+6

H 147 – D 145

24X60W E14

Cast brass chandelier,
finished in antique french
gold with Bohemian crystals.

Lampadario in ottone, finitura
oro francese invecchiato con
cristalli di Boemia.





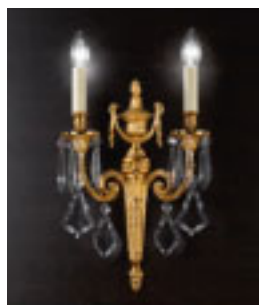
83/5/G/CRY pag. 26



83/3+2/CRY pag. 27



83/3/CRY pag. 28



83/2/CRY pag. 29

28/15

H 120 – D 84

15X60W E14

Cast brass chandelier,
finished in antique french
gold with Bohemian crystals.

Lampadario in ottone, finitura
oro francese invecchiato con
cristalli di Bohemia.





83/5/G/CRY pag. 26



83/3+2/CRY pag. 27



83/3/CRY pag. 28



83/2/CRY pag. 29

28/8+4

H 90 – D 78

12X60W E14

Cast brass chandelier,
finished in antique french
gold with Bohemian crystals.

Lampadario in ottone, finitura
oro francese invecchiato con
cristalli di Bohemia.

28/8

H 100 – D 70

8X60W E14

Cast brass chandelier,
finished in antique french
gold with Bohemian crystals.

Lampadario in ottone, finitura
oro francese invecchiato con
cristalli di Bohemia.



83/5/G/CRY

pag. 26



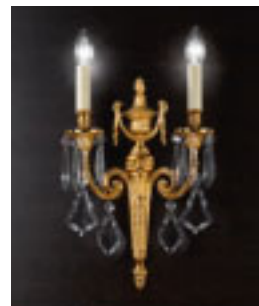
83/3+2/CRY

pag. 27



83/3/CRY

pag. 28



83/2/CRY

pag. 29

**28/6**

H 74 – D 50
6X60W E14

Cast brass chandelier,
finished in antique french
gold with Bohemian crystals.

Lampadario in ottone, finitura
oro francese invecchiato con
cristalli di Boemia.

**83/5/G/CRY**

pag. 26

**83/3+2/CRY**

pag. 27

**83/3/CRY**

pag. 28

**83/2/CRY**

pag. 29

30/12

H 125 – D 95

12X60W E14

Cast brass chandelier,
finished in antique french
gold with Bohemian crystals.

Lampadario in ottone, finitura
oro francese invecchiato con
cristalli di Bohemia.



**30/10**

H 91,5 – D 70

10X60W E14

Cast brass chandelier,
finished in antique french
gold with Bohemian crystals.

Lampadario in ottone, finitura
oro francese invecchiato con
cristalli di Boemia.

900/18

H 130 – D 100

18X60W E14

Cast brass chandelier,
finished in antique french
gold with Bohemian crystals.

Lampadario in ottone, finitura
oro francese invecchiato con
cristalli di Boemia.

900/48

H 182 – D 142

48X60W E14



**681/12+6**

H 120 – D 100

18X60W E14

Cast brass chandelier,
finished in mat dark bronze
with Bohemian crystals.

Lampadario in ottone, finitura
brunito scuro opaco con cristalli
di Boemia.

681/18+6

H 160 – D 130

24X60W E14

681/8

H 90 – D 70

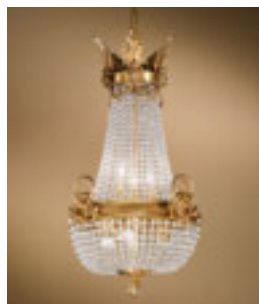
8X60W E14



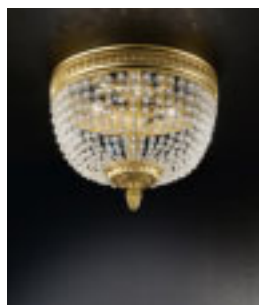
152/3/L pag. 6



152/2/AP pag. 31



152/3+3 pag. 60



152/4/PL pag. 99

152/8+4

H 110 – D 80

12X60W E14

Cast brass chandelier,
finished in antique french
gold and crystals.

Lampadario in ottone, finitura
oro francese invecchiato con
cristalli.





152/3/L pag. 6



152/2/AP pag. 31



152/3+3 pag. 60



152/4/PL pag. 99

152/8+4/SILV

H 110 – D 80

12X60W E14

Cast brass chandelier,
finished in antique silver
plate and crystals.Lampadario in ottone, finitura
argento fiorentino invecchiato
con cristalli.



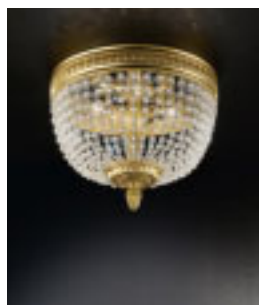
152/3/L pag. 6



152/2/AP pag. 31



148/3/L pag. 18



152/4/PL pag. 99

152/3+3

H 70 - D 45

6X60W E14

Cast brass chandelier,
finished in antique french
gold and crystals.

Lampadario in ottone, finitura oro
francese invecchiato con cristalli.



**610/24**

H 120 – D 110

24X60W E14

Cast brass chandelier,
finished in antique bronze
with Bohemian crystals.

Lampadario in ottone, finitura
brunito vecchio con cristalli di
Bohemia.

**610/12**

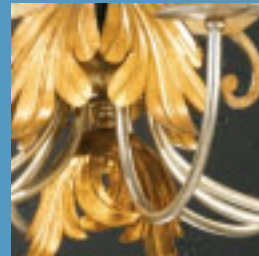
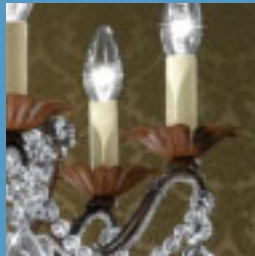
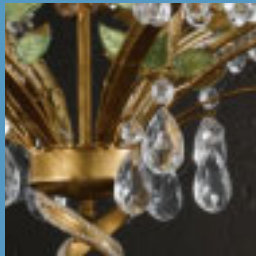
H 90 – D 90
12X60W E14

Cast brass chandelier, finished in
antique bronze with Bohemian crystals.

Lampadario in ottone, finitura brunito vecchio
con cristalli di Boemia.

Iron chandeliers with crystals

Lampadari in ferro con cristalli



**103/10**

H 100 – D 100

10X60W E14

Silver leaf finish iron
chandelier with crystals.Lampadario in ferro battuto,
finitura foglia argento con cristalli.

**103/2/AP**

H 40 – D 35
2X60W E14
Gold leaf finish iron wall
light with crystals.

Applique in ferro battuto,
finitura foglia oro con cristalli.

103/8

H 94 – D 80
8X60W E14
Gold leaf finish iron
chandelier with crystals.

Lampadario in ferro battuto,
finitura foglia oro con cristalli.

103/6

H 83 – D 76
6X60W E14
Silver leaf finish iron
chandelier with crystals.

Lampadario in ferro battuto,
finitura foglia argento con cristalli.

103/4

H 76 - D 68

4X60W E14

Rust finish iron chandelier
with crystals with organza
amber plissé fabric shade.

Lampadario in ferro battuto
finitura ruggine con cristalli
e paralume plissé in organza
ambra.



**126/6**

H 75 – D 58
6X60W E14
Gold leaf finish iron
chandelier with crystals.

Lampadario in ferro battuto,
finitura foglia oro con cristalli.

126/2/AP

H 60 – D 35
2X60W E14
Gold leaf finish iron wall
light with crystals.

Applique in ferro battuto,
finitura foglia oro con cristalli.

**126/2/L**

H 75 – D 35
2X60W E14
Gold leaf finish iron table
lamp with crystals.

Lampada da tavolo in ferro
battuto, finitura foglia oro con
cristalli.

323/2/AP

H 45 - D 40
2X60W E14
Gold leaf finish iron wall
light with crystals.

Applique in ferro battuto,
finitura foglia oro con cristalli.

**323/8**

H 85 - D 83
8X60W E14
Rust finish iron chandelier
with crystals.

Lampadario in ferro battuto,
finitura ruggine con cristalli.

323/6

H 70 - D 70
6X60W E14
Gold leaf finish iron
chandelier with crystals
with organza amber plissé
fabric shades.

Lampadario in ferro battuto,
finitura foglia oro con cristalli
con paralumi plissé in
organza ambra.



**382/8**

H 80 – D 80
8X60W E14
Green gold finish iron
chandelier with crystals.

Lampadario in ferro battuto,
finitura verde sfumato oro con
cristalli.

**382/3/AP**

H 42 – D 42
3X60W E14
Green gold finish iron wall light
with crystals.

Applique in ferro battuto, finitura
verde sfumato oro con cristalli.

**595/8**

H 94 - D 80

8X60W E14

Green gold finish iron chandelier
with crystals.Lampadario in ferro battuto, finitura
verde sfumato oro con cristalli.

**103/2/MOD/AP**

H 44 - D 35

2X60W E14

Red gold finish iron wall light
with crystals.Applique in ferro battuto, finitura
rosso sfumato oro con cristalli.**103/8/MOD**

H 94 - D 80

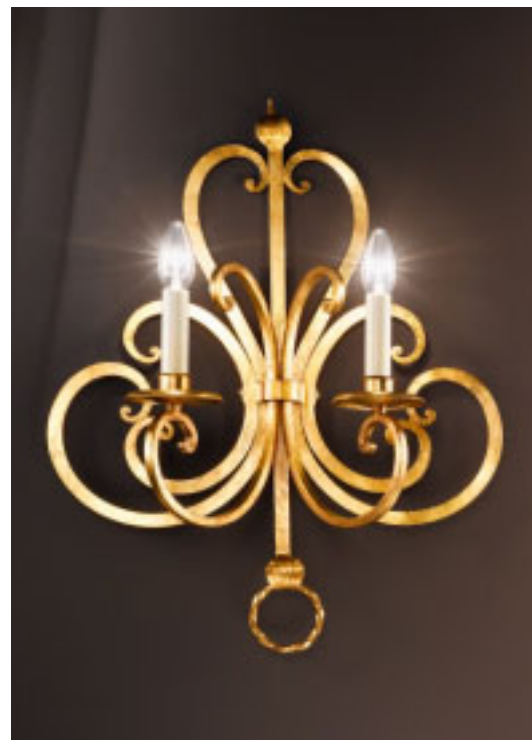
8X60W E14

Red gold finish iron
chandelier with crystals.Lampadario in ferro battuto,
finitura rosso sfumato oro con
cristalli.

**1256/6**

H 80 – D 65
6X60W E14
Gold leaf and silver leaf
finish iron chandelier.

Lampadario in ferro battuto,
finitura foglia oro e foglia
argento.

**1256/2/AP**

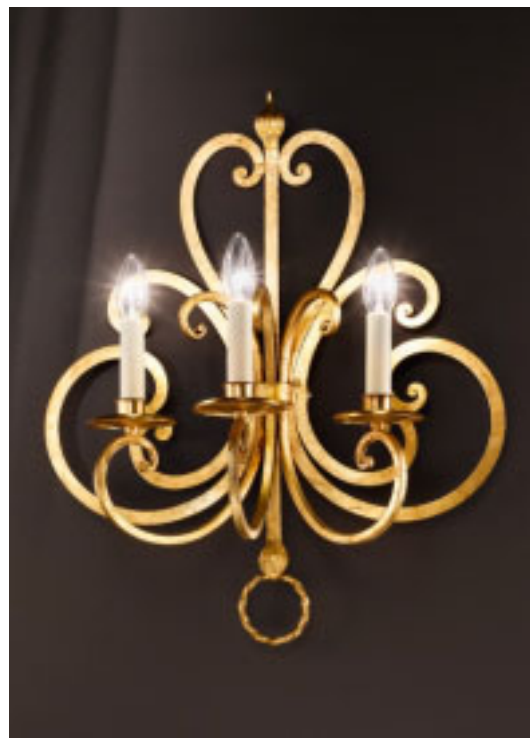
H 60 – D 48
2X60W E14
Gold leaf finish iron
wall light.

Applique in ferro battuto,
finitura foglia oro.

**1256/8**

H 90 – D 104
8X60W E14
Gold leaf and silver leaf finish
iron chandelier.

Lampadario in ferro battuto,
finitura foglia oro e foglia argento.

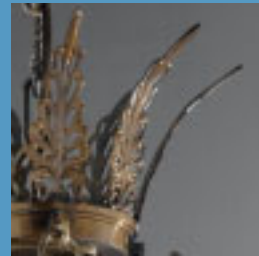
**1256/3/AP**

H 60 – D 51
3X60W E14
Gold leaf finish iron
wall light.

Applique in ferro battuto,
finitura foglia oro.

English style chandeliers

Lampadari in stile inglese



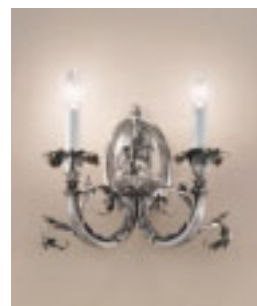
**172/6+3**

H 80 - D 92

9X60W E14

Cast brass chandelier,
finished in antique
silver plate.

Lampadario in ottone, finitura
argento fiorentino invecchiato.



172/2/AP

pag. 30

172/6

H 80 - D 76

6X60W E14

Cast brass chandelier,
finished in antique
silver plate.Lampadario in ottone, finitura
argento fiorentino invecchiato.

172/2/AP

pag. 30



1804/8

H 60 – D 70

8X60W E14

Cast brass chandelier,
finished in antique
french gold.Lampadario in ottone, finitura
oro francese invecchiato.

1806/1/L

pag. 11



1805/3/AP

pag. 32

**CL47/12**

H 80 - D 70

12X60W E14

Cast brass chandelier,
finished in antique french
gold and green details.

Lampadario in ottone, finitura
oro francese invecchiato e
particolari verdi.

CL47/6

H 65 - D 55

6X60W E14



CL47/2/AP



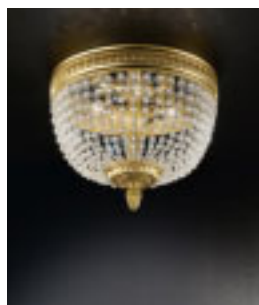
152/3/L pag. 6



148/3/L pag. 18



152/2/AP pag. 31



152/4/PL pag. 99

148/10

H 106 – D 88

10X60W E14

Cast brass chandelier,
finished in antique french
gold and mat black details.

Lampadario in ottone, finitura
oro francese invecchiato e
dettagli nero opaco.



**31/8**

H 90 – D 75

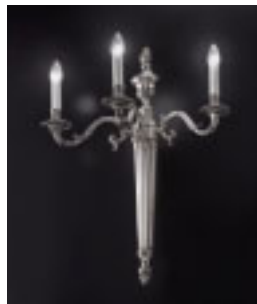
8X60W E14

Cast brass chandelier,
finished in antique french
gold and mat black details.

Lampadario in ottone, finitura
oro francese invecchiato e
dettagli nero opaco.



869/3/L pag. 19



869/3/AP pag. 33

**869/8**

H 100 – D 92

8X60W E14

Cast brass chandelier,
finished in antique silver
plate and mat black details.

Lampadario in ottone, finitura
argento fiorentino invecchiato e
dettagli nero opaco.

**869/12**

H 100 – D 120

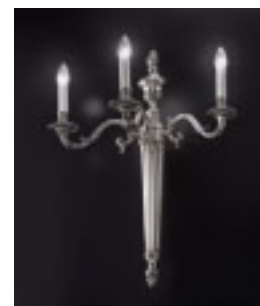
12X60W E14

Cast brass chandelier,
finished in antique silver
plate and mat black details.

Lampadario in ottone, finitura
argento fiorentino invecchiato e
dettagli nero opaco.



869/3/L



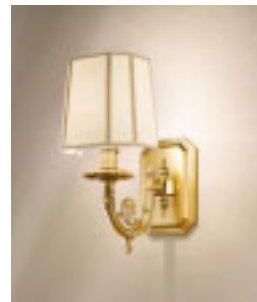
869/3/AP

pag. 33

**495/6**

H 80 – D 70

6X60W E14

Cast brass chandelier,
finished in satin real gold.Lampadario in ottone, finitura
bagno oro satinato.

495/1/AP

pag. 35



495/2/AP

pag. 35



495/1/AP pag. 35



495/2/AP pag. 35



495/8

H 90 - D 90
8X60W E14
Cast brass chandelier,
finished in oxidized antique
bronze.

Lampadario in ottone, finitura
brunito vecchio ossidato.

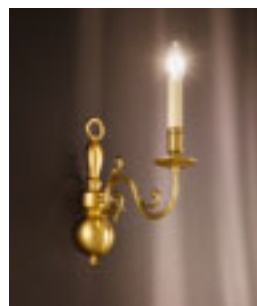
**1790/8**

H 60 - D 90

8X60W E14

Brass chandelier, finished in antique bronze.

Lampadario in ottone, finitura brunito vecchio.



1790/1/AP

pag. 36



1790/2/AP

pag. 36

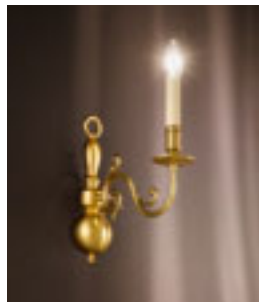
1790/6

H 50 - D 63

6X60W E14

Brass chandelier, finished in antique french gold.

Lampadario in ottone, finitura oro francese invecchiato.

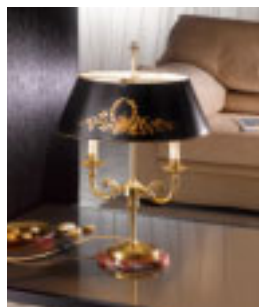


1790/1/AP pag. 36

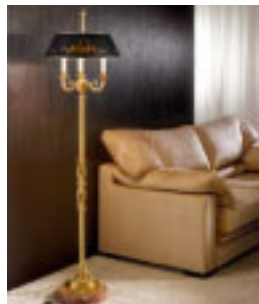


1790/2/AP pag. 36





615/2/L pag. 20



616/3/T pag. 21



617/3/AP pag. 37

**619/6**

H 92 – D 80

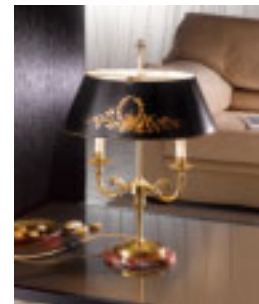
6X60W E14

Cast brass chandelier,
finished in antique
french gold.Lampadario in ottone, finitura
oro francese invecchiato.

**618/6**

H 48 - D 45

6X60W E14

Cast brass chandelier,
finished in antique
french gold.Lampadario in ottone, finitura
oro francese invecchiato.

615/2/L

pag. 20



616/3/T

pag. 21



617/3/AP

pag. 37



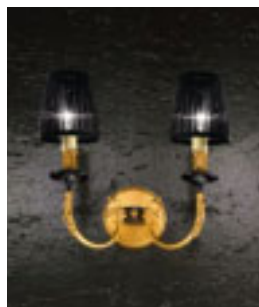
494/1/AP

pag. 38

**494/6**H 70 – D 65
6X60W E14

Cast brass chandelier,
finished in real gold and
mat black with bobeches in
black Marquinia marble and
ivory fabric shades.

Lampadario in ottone, finitura
bagno oro e nero opaco con
bobeches in marmo nero
Marquinia e paralumi avorio.



M321/2/AP pag. 38



M321/6

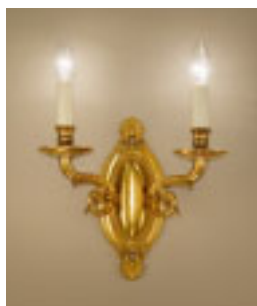
H 65 – D 56
6X60W E14
Cast brass chandelier,
finished in antique french
gold and mat black with
organza black plissé
fabric shades.

Lampadario in ottone, finitura
oro francese invecchiato e nero
opaco con paralumi in organza
nero plissé.

**1846/6+3**

H 65 - D 66
6X60W E14 + 3X60W E27
Cast brass chandelier,
finished in antique french
gold with satin cut glass.

Lampadario in ottone, finitura
oro francese invecchiato con
vetro satinato molato.

**1846/2/AP**

pag. 40

**1921/2/LAV**

pag. 43

**1846/3/PL**

pag. 100

**1846/8+4**

H 93 – D 84
 8X60W E14 + 4X60W E27
 Cast brass chandelier,
 finished in antique bronze
 with satin cut glass.

Lampadario in ottone, finitura
 brunito vecchio con vetro
 satinato molato.



1846/2/AP pag. 40



1921/2/LAV pag. 43



1846/3/PL pag. 100

1884/6+3

H 75 - D 68
6X60W E14 + 3X60W E27
Cast brass chandelier,
finished in antique french
gold with satin cut glass.

Lampadario in ottone, finitura
oro francese invecchiato con
vetro satinato molato.



1884/1/AP

pag. 40





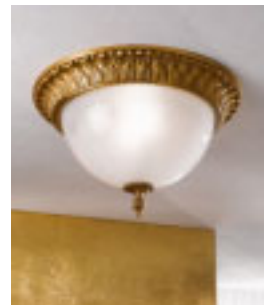
Cast brass chandeliers,
finished in antique french
gold with blown satin glass.

Lampadari in ottone, finitura
oro francese invecchiato con
vetro soffiato satinato.



620/2/PL

pag. 102



620/3/PL

pag. 102

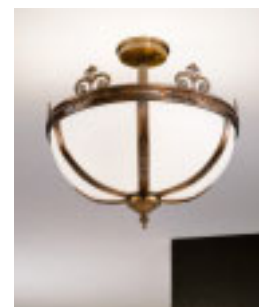
621/3/P
H 60 – D 40
3X60W E14

621/3/G
H 74 – D 50
3X60W E14



Cast brass chandeliers,
finished in antique bronze
with white satin glasses.

Lampadari in ottone, finitura
brunito vecchio con vetro
bianco satinato.



3118/3/P/PL

pag. 103

3118/5/G
H 104 – D 83
5X60W E27

3118/5/P
H 76 – D 50
3X60W E27

3118/4/M
H 90 – D 65
4X60W E14

Ceiling fittings

Plafoniere



**1146/6/PL**

H 30 – D 50

6X60W E14

Cast brass ceiling fitting,
finished in antique french
gold with crystals.

Plafoniera in ottone, finitura
oro francese invecchiato con
cristalli.



152/4/PL

H 28 – D 40
4X60W E14

Cast brass ceiling fitting,
finished in antique french
gold with crystals.

Plafoniera in ottone, finitura
oro francese invecchiato con
cristalli.



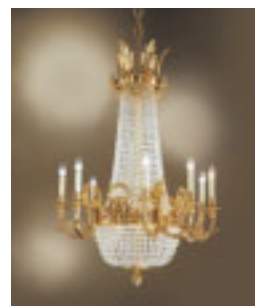
152/3/L

pag. 6



152/2/AP

pag. 31



152/8+4

pag. 58



152/3+3

pag. 60

**1846/3/PL**

H 19 – D 39

3X60W E14

Cast brass ceiling fitting, finished in antique french gold with satin cut glass.

Plafoniera in ottone, finitura oro francese invecchiato con vetro satinato molato.

**1846/2/AP**

pag. 40

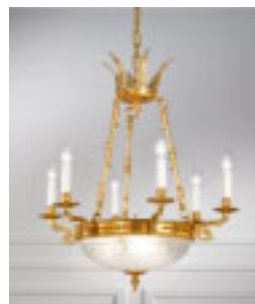
**1920/2/LAV/SILV** pag. 43**1846/4PL**

H 20 – D 49

4X60W E14

Cast brass ceiling fitting, finished in antique french gold with satin cut glass.

Plafoniera in ottone, finitura oro francese invecchiato con vetro satinato molato.

**1846/6+3**

pag. 92

**1846/8+4**

pag. 93

**202/3/P/PL**

H 20 – D 36

2X60W E14

Cast brass ceiling fitting,
finished in antique french
gold with satin glass.

Plafoniera in ottone, finitura oro
francese invecchiato con vetro
satinato.

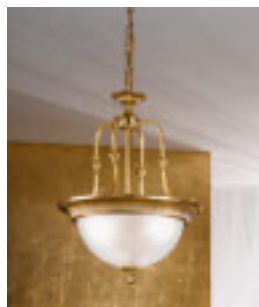
**202/3/M/PL**

H 20 – D 46

3X60W E14

Cast brass ceiling fitting,
finished in antique french
gold with satin glass.

Plafoniera in ottone, finitura oro
francese invecchiato con vetro
satinato.



621/3/P pag. 95



621/3/G pag. 95



620/2/P/PL

H 25 - D 40
2X60W E14
Cast brass ceiling fitting,
finished in antique french
gold with blown satin glass.

Plafoniera in ottone, finitura oro
francese invecchiato con vetro
soffiato satinato.

620/3/G/PL

H 30 - D 50
3X60W E14

Cast brass ceiling, finished in antique bronze with white satin glasses.

Plafoniera in ottone, finitura brunito vecchio con vetri bianco satinato.



3118/5/G pag. 96
3118/4/M pag. 96
3118/3/P pag. 96



3118/5/G/PL
H 70 – D 74
5X60W E14

3118/4/M/PL
H 60 – D 60
4X60W E14

3118/3/P/PL
H 50 – D 45
3X60W E14

**1760/1/D.40/PL**

H 38 – D 40
1X60W E14
Brass ceiling fitting, finished
in antique bronze with ivory
plissé fabric shade.

Plafoniera in ottone, finitura
brunito vecchio con paralume
plissé avorio.

1760/4/D.60/PL

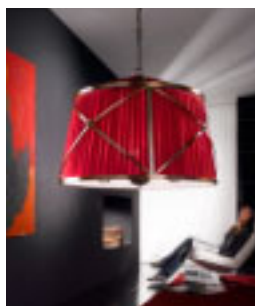
H 48 – D 60
4X60W E14

1760/5/D.80/PL

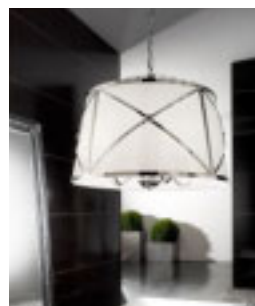
H 53,5 – D 80
5X60W E14

1760/5/D.100/PL

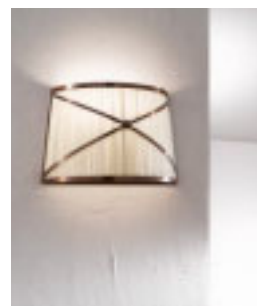
H 80 – D 100
5X60W E14



1760/4/D.60/BORDEAUX
pag. 124



1760/4/D.60/NI pag. 125



1760/2/G/AP pag. 123

Lanterns

Lanterne



**661/4/P**

H 62 – D 31

4X60W E14

Cast brass lantern, finished
in satin real gold.Lanterna in ottone, finitura
bagnato oro satinato.**661/4/M**

H 72 – D 40

4X60W E14

Cast brass lantern, finished
in antique french gold.Lanterna in ottone, finitura oro
francese invecchiato.

**661/6/G**

H 106 – D 57

6X60W E14

Cast brass lantern, finished
in antique silver plate.Lanterna in ottone, finitura
argento fiorentino invecchiato.

**310/6/G**

H 100 – D 57

6X60W E14

Cast brass lantern, finished
in antique french gold.Lanterna in ottone, finitura oro
francese invecchiato.**310/5/P**

H 80 – D 45

5X60W E14

Cast brass lantern, finished
in antique french gold.Lanterna in ottone, finitura oro
francese invecchiato.

197/4/B.OX

H 90 - D 41

4X60W E14

Cast brass lantern, finished
in oxidized antique bronze.Lanterna in ottone, finitura
brunito vecchio ossidato.

**1789/3/P**

H 56 – D 25

3X60W E14

Cast brass lantern, finished
in antique bronze.Lanterna in ottone, finitura
brunito vecchio.**1789/4/M**

H 60 – D 31

4X60W E14

Cast brass lantern, finished
in antique french gold.Lanterna in ottone, finitura oro
francese invecchiato.



1789/4/G

H 83 - D 41

4X60W E14

Cast brass lantern, finished
in antique bronze.

Lanterna in ottone, finitura
brunito vecchio.

**733/3+3**

H 98 – D 75

6X60W E14

Cast brass lantern, finished in antique french gold with blown clear glass.

Lanterna in ottone, finitura oro francese invecchiato con vetro soffiato trasparente.



1883/5/G
H 98 – D 48
5X60W E14

1883/3/P
H 78 – D 37,5
3X60W E14

Cast brass lantern, finished in antique french gold with blown clear glass.

Lanterna in ottone, finitura oro francese invecchiato con vetro soffiato trasparente.



1920/2/LAV/SILV pag. 43



1921/2/LAV pag. 43

**337/3/P**

H 52 – D 30

3X60W E14

Brass lantern, finished in antique bronze with blown clear glass.

Lantern in ottone, finitura brunito vecchio con vetro soffiato trasparente.

335/3/M

H 100 – D 40

3X60W E14

Brass lantern, finished in antique bronze with blown clear glass.

Lantern in ottone, finitura brunito vecchio con vetro soffiato trasparente.



335/5/G

H 125 – D 54

5X60W E14

Brass lantern, finished in antique bronze with blown clear glass.

Lanterna in ottone, finitura brunito vecchio con vetro soffiato trasparente.



Brass lantern, finished in silver plate, with blown clear glass.

Lanterna in ottone, finitura in argento lucido, con vetro soffiato trasparente.

335/3/M/ASTE

H 83 – D 42
3X60W E14

335/3/P/ASTE

H 50 – D 28
3X60W E14

335/4/G/ASTE

H 108 – D 54

4X60W E14

Brass lantern, finished in silver plate, with blown clear glass.

Lanterna in ottone, finitura in argento lucido, con vetro soffiato trasparente.



**804/4/MOD/NI**

H 66 – D 30,5

4X60W E14

Brass lantern, finished in polished nickel.

Lanterna in ottone, finitura nichel lucido.

804/8/MOD/NI

H 90 – D 44

8X60W E14



1921/2/NI



1920/2/NI

pag. 44

804/2/MOD/NI

H 55 – D 30,5

2X60W E14

Brass wall light, finished in polished nickel.

Applique in ottone, finitura nichel lucido.



12/4/G/NI

H 68 – D 37

4X60W E14

Brass lantern, finished in polished nickel.

Lanterna in ottone, finitura nichel lucido.

12/4/M/NI

H 57 – D 28

4X60W E14

12/3/P/NI

H 41 – D 20

3X60W E14



12/2/AP/NI

H 50 – D 27

2X60W E14

Brass wall light, finished in polished nickel.

Applique in ottone, finitura nichel lucido.



1921/2/NI



1920/2/NI

Brass lanterns, finished in polished nickel.

Lanterne in ottone, finitura nichel lucido.



1921/2/NI pag. 44



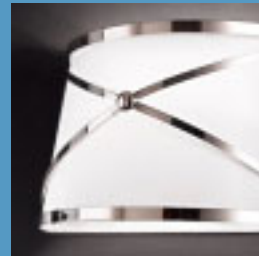
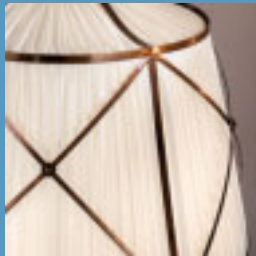
1920/2/NI pag. 44



228/4/G/S/NI
H 85 – D 41
4X60W E14

228/4/M/S/NI
H 65 – D 31
4X60W E14

Soft light





1760/1/D.40/PL pag. 104



1760/4/D.60/BORDEAUX
pag. 124

1760/5/D.100/PL

H 80 – D 100
5X60W E14

Brass pendant, finished in antique bronze with ivory plissé fabric shade.

Sospensione in ottone, finitura brunito vecchio con paralume plissé avorio.

1760/1/D.40

H 38 – D 40
1X60W E14

1760/4/D.60

H 48 – D 60
5X60W E14

1760/5/D.80

H 53,5 – D 80
5X60W E14





1760/1/D.40/PL pag. 104



1760/4/D.60/BORDEAUX
pag. 124



1760/2/G/AP

L 45 – H 29,5 – SP 19
2X60W E14

Brass wall light, finished in antique bronze with ivory plissé fabric shade.

Applique in ottone, finitura brunito vecchio con paralume plissé avorio.

1760/2/P/AP

L 38,5 – H 24 – SP 17
2X60W E14

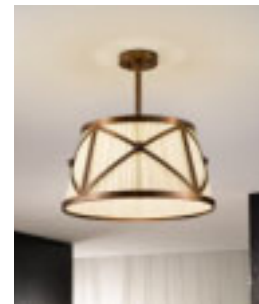
**1760/4/D.60/
BORDEAUX**

H 48 – D 60

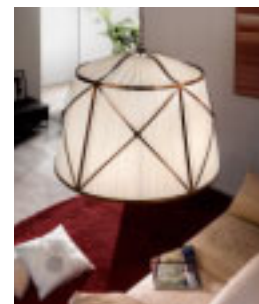
4X60W E14

Brass pendant, finished in antique bronze with bordeaux plissé fabric shade.

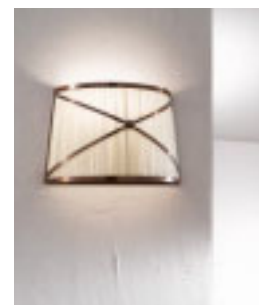
Sospensione in ottone, finitura brunito vecchio con paralume plissé rosso bordeaux.



1760/1/D.40/PL pag. 104



1760/5/D.100 pag. 122



1760/2/G/AP pag. 123



1760/4/D.60/NI

H 48 - D 60
4X60W E14
Brass pendant, finished in
polished nickel with white
fabric shade.

Sospensione in ottone, finitura
nichel lucido con paralume
bianco.



1760/1/D.40/NI pag. 126



1760/2/P/NI/AP pag. 126



**1760/1/D.40/NI**

H 38 – D 40

1X60W E14

Brass pendant, finished in polished nickel with white fabric shade.

Sospensione in ottone, finitura nichel lucido con paralume bianco.

**1760/2/P/NI/AP**

L 38,5 – H 24 – SP 17

2X60W E14

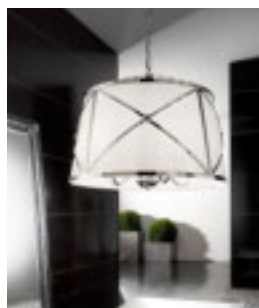
Brass wall light, finished in polished nickel with white fabric shade.

Applique in ottone, finitura nichel lucido con paralume bianco.

1760/2/G/NI/AP

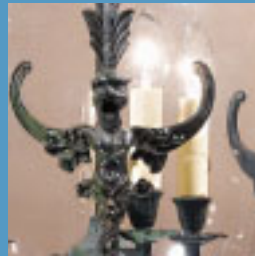
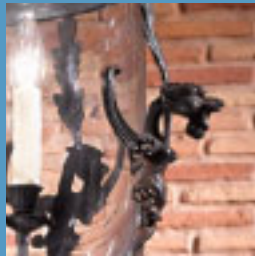
L 45 – H 29,5 – SP 19

2X60W E14



1760/4/D.60/NI pag. 125

Outdoor Lanterns





703/1

H 100 – D 30

1X60W E27 - IP43

Cast brass post lamp verdigris finish with satin blown glass or clear blown glass.

Lantern with outdoor post in brass verdigris finish with satin blown glass or clear blown glass.

704/1

H 145 – D 30

1X60W E27 - IP43

Cast brass post lamp verdigris finish with satin blown glass or clear blown glass.

Lantern with outdoor post in brass verdigris finish with satin blown glass or clear blown glass.



705/3

H 250 – D 75
3X60W E27 - IP43
Cast brass post lamp
verdigris finish with
satin blown glass or clear
blown glass.

Lantern con palo da esterno
in ottone finitura verde scavo
con vetro soffiato satinato o
vetro soffiato trasparente.

**709/1**

H 55 - D 30 - SP 45

1X60W E27 - IP43

Cast brass wall lantern verdigris finish, with satin blown glass or clear blown glass.

Lantern with arm in brass, verdigris finish with satin blown glass or clear blown glass.

**708/3**

H 100 - D 45

3X60W E27

Cast brass lantern verdigris finish with satin blown glass or clear blown glass.

Lantern in brass verdigris finish with satin blown glass or clear blown glass.

710/5

H 120 – D 60

5X60W E27

Cast brass lantern mat dark
bronze finish with clear
blown glass.

Lanterna in ottone finitura
brunito scuro opaco con vetro
soffiato trasparente.



**706/3**

H 85 – D 33
3X60W E14

Cast brass lantern verdigris finish with satin blown glass or clear blown glass.

Lanterna in ottone finitura verde scavo con vetro soffiato satinato o vetro soffiato trasparente.

707/1

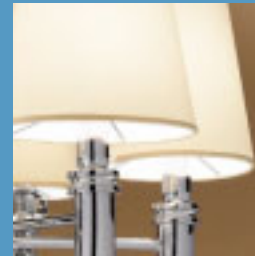
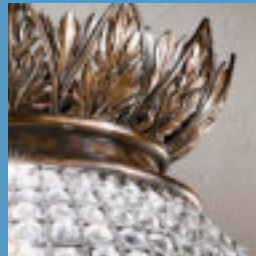
H 85 – D 33 – SP 45
1X60W E27 - IP43

Cast brass wall lantern, mat dark bronze finish, with satin blown glass or clear blown glass.

Lanterna con braccio in ottone, finitura brunito scuro opaco con vetro soffiato.

Special works

Lavori speciali



**760/2/AP/SX**

H 50 - D 32

2X60W E14

Cast brass wall light, finished
in antique french gold.Applique in ottone, finitura oro
francese invecchiato.**760/2/AP/DX**

H 50 - D 32

2X60W E14

Cast brass wall light, finished
in antique french gold.Applique in ottone, finitura oro
francese invecchiato.

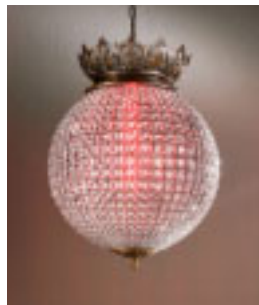
**713/5/AP**

H 50 - D 40

5X60W E14

Cast brass wall light,
finished in antique french
gold.

Appique in ottone, finitura oro
francese invecchiato.

**613/LED**

H 100 – D 80

LED multicolor

Cast brass chandelier,
finished in antique bronze
with crystals and switch
with dimmer to light on
multicolour led RGB.

Sospensione in ottone, finitura
brunito vecchio con cristalli e
telecomando con dimmer per
accensione led multicolour RGB.

613/12

H 100 – D 80

12X60W E27

721/8

H 70 - D 90

8X60W E27

Pendant decorated in silver
with crystal lozenges.Sospensione decorata in argento
con losanghe in cristallo.

805/6

H 74 - D 65

6X60W E14

Cast brass chandelier,
finished in polished nickel
with ivory fabric shades.

Lampadario in ottone,
finitura nichel lucido con
paralumi avorio.



**806/1/AP**

H 63 – D 20

1X60W E14

Cast brass wall light,
finished in polished nickel
with ivory fabric shade.

Applique in ottone,
finitura nichel lucido con
paralume avorio.

**806/2/AP**

H 67 – D 34

2X60W E14

Cast brass wall light,
finished in polished nickel
with ivory fabric shade.

Applique in ottone,
finitura nichel lucido con
paralume avorio.

**865/9/NI**

H 100 – D 110

9X60W E14

Cast brass chandelier,
finished in polished nickel
and mat black details with
bobeche in black crystals.

Lampadario in ottone, finitura
nichel lucido con particolari neri
e bobeche in cristallo nero.



Art.	pag.	Art.	pag.	Art.	pag.	Art.	pag.
CL47/2/AP	34	172/6	77	621/3/P	95	1760/5/D.100	122
CL47/6	79	172/6+3	76	661/4/M	106	1760/4/D.60/bordeaux	124
CL47/12	79	197/4/B.OX	109	661/4/P	106	1760/2/G/AP	123
M321/2/AP	38	202/2/P/PL	101	661/6/G	107	1760/2/P/AP	123
M321/6	91	202/3/M/PL	101	681/12+6	57	1760/4/D.60/NI	125
12/2/AP/NI	119	228/4/G/S/NI	120	681/18+6	57	1760/1/D.40/NI	126
12/3/P/NI	119	228/4/M/S/NI	120	681/8	57	1760/2/P/NI/AP	126
12/4/G/NI	119	310/5/P	108	703/1	128	1760/2/G/NI/AP	126
12/4/M/NI	119	310/6/G	108	704/1	128	1789/3/P	110
16/6	48	323/2/AP	68	705/3	129	1789/4/M	110
16/8	47	323/6	69	706/3	132	1789/4/G	111
16/15	46	323/8	68	707/1	132	1790/1/AP	36
28/6	53	335/3/M/ASTE	116	708/3	130	1790/2/AP	36
28/8	52	335/3/P/ASTE	116	709/1	130	1790/6	87
28/15	50	335/4/G/ASTE	117	710/5	131	1790/8	86
28/18+6	49	335/5/G	115	721/8	137	1801/3/L	16
28/8+4	51	335/3/M	114	723/3/L	22	1804/8	78
30/10	55	337/3/P	114	723/3/T	23	1805/2/AP	32
30/12	54	382/3/AP	70	733/3+3	112	1805/3/AP	32
31/8	81	382/8	70	755/3/AP	135	1806/1/L	11
76/2/AP	41	410/1/AP	24	760/2/AP/DX	134	1845/1/L	10
83/2	29	410/1/L	24	760/2/AP/SX	134	1846/2/AP	40
83/2/CRY	29	410/1/T	24	804/2/MOD/NI	118	1846/3/PL	100
83/3	28	419/2/AP	42	804/4/MOD/NI	118	1846/4/PL	100
83/3/CRY	28	420/1/L	15	804/8/MOD/NI	118	1846/6+3	92
83/3+2/CRY	27	494/1/AP	38	805/6	138	1846/8+4	93
83/5/G/CRY	26	494/6	90	806/1/AP	139	1883/3/P	113
84/2/AP	39	495/1/AP	35	806/2/AP	139	1883/5/G	113
84/3/AP	39	495/2/AP	35	865/9/NI	140	1884/1/AP	40
103/2/AP	65	495/6	84	869/3/AP	33	1884/6+3	94
103/2/MOD/AP	72	495/8	85	869/3/L	19	1885/1/L	7
103/4	66	509/2	39	869/8	82	1920/2/LAV	43
103/6	65	528/5/L	13	869/12	83	1921/2/LAV	43
103/8	65	533/1/L	12	870/2/L	17	1920/2/LAV/SILV	43
103/8/MOD	72	534/1/L	9	900/18	56	1921/2/LAV/SILV	43
103/10	64	536/2/AP	41	900/48	56	1920/2/NI	44
126/2/AP	67	595/8	71	1133/1/L	14	1921/2/NI	44
126/2/L	67	610/12	62	1146/6/PL	98	3118/3/P	96
126/6	67	610/24	61	1256/2/AP	73	3118/4/M	96
148/10	80	613/LED	136	1256/3/AP	74	3118/5/G	96
148/3/L	18	613/12	136	1256/6	73	3118/3/P/PL	103
152/2/AP	31	615/2/L	20	1256/8	74	3118/4/M/PL	103
152/3/L	6	616/3/T	21	1760/1/D.40/PL	104	3118/5/G/PL	103
152/3+3	60	617/3/AP	37	1760/4/D.60/PL	104		
152/4/PL	99	618/6	89	1760/5/D.80/PL	104		
152/8+4	58	619/6	88	1760/5/D.100/PL	104		
152/8+4/SILV	59	620/2/P/PL	102	1760/1/D.40	122		
164/2/AP	42	620/3/G/PL	102	1760/4/D.60	122		
172/2/AP	30	621/3/G	95	1760/5/D.80	122		

Brass
Ottone



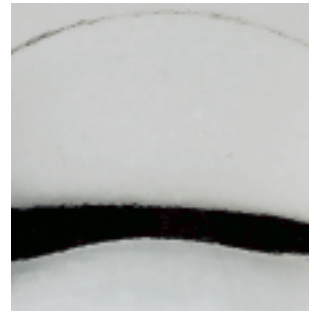
Antique french gold
Oro francese invecchiato



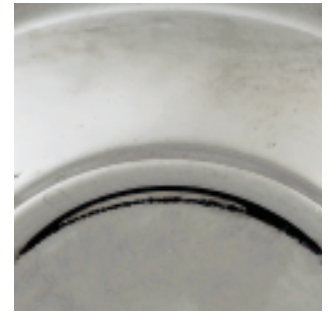
Mat dark bronze
Brunito scuro opaco



Antique silver plate
Argento fiorentino invecchiato



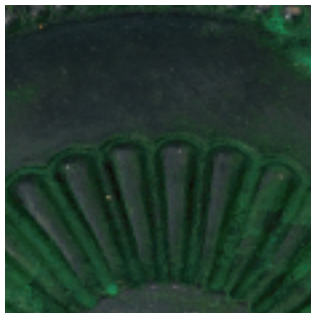
Silver plate
Argento lucido



Polished nichel
Nichel lucido



Antique bronze
Brunito vecchio



Verdigris
Verde scavo



Oxidized antique bronze
Brunito vecchio ossidato

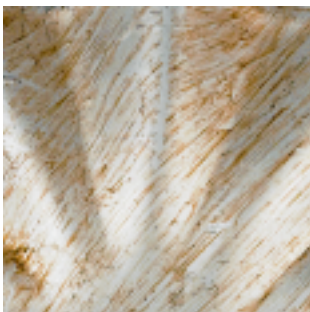


Satin real gold
Bagno oro satinato



Bagno oro
Real gold

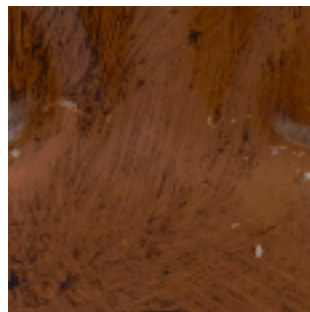
Iron
Ferro



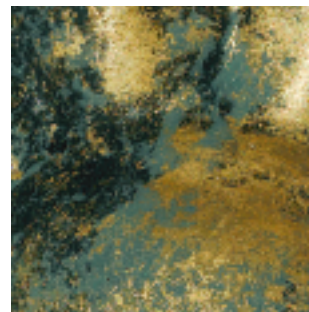
Silver leaf
Foglia argento



Gold leaf
Foglia oro



Rust
Ruggine



Green-gold
Verde sfumato oro



Red-gold
Rosso sfumato oro

Lampshades
Paralumi



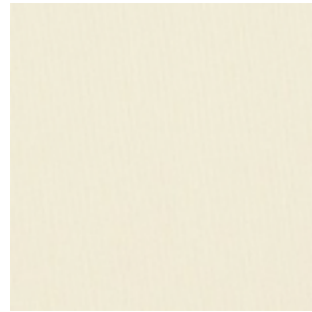
Black
Nero



Blue
Blu



Yellow
Giallo



Ivory
Avorio



White
Bianco



White plissé
Bianco plissé



Ivory plissé
Avorio plissé



Beige plissé
Beige plissé



Yellow plissé
Giallo plissé



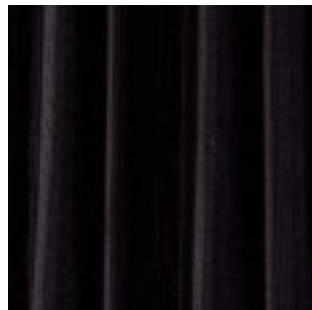
Bordeaux plissé
Bordeaux plissé



Green plissé
Verde plissé



Blue plissé
Blu plissé



Black plissé
Nero plissé



General sales conditions

Complaints and returns: complaints shall be accepted within 8 days of the date the goods are delivered. After this deadline, no disputes of any type will be taken into consideration. Any goods shall be returned with prior authorization only and delivered carriage free. In the event of the arrival of clearly damaged packages, we recommend you sign the way bill under reserve.

- All model included in this catalogue are ideated by ARIZZI MARIO E FIGLI & C. and they are made in Italy.
- Descriptions, sizes and colours in this catalogue are purely indicative. In the customer's interest, ARIZZI MARIO E FIGLI & C. reserves the right to make all the alterations and improvements considered necessary without prior notice.
- All the products are CE, UL and GHOST certified. These are guarantee marks, issued after a series of strict tests, which certifies the product quality and its compliance with the safety standards envisaged by CE , UL and GHOST regulation.
- Decisions in case of controversies will be taken by the Law-court of Florence, Italy also when contracts have been arranged elsewhere.
- ARIZZI MARIO E FIGLI & C. is not liable for injuries or damages due to the installation of the fixture by not qualified people or due to the modification of the original technical characteristics of the items.
- It is forbidden to reproduce total or partial images of this catalogue without ARIZZI MARIO E FIGLI & C.'s authorization.

Condizioni generali di vendita

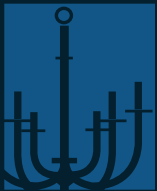
Reclami e resi: i reclami si accettano entro 8 giorni dalla data di ricevimento della merce. Trascorso tale termine non verranno prese in considerazione contestazioni di qualsiasi genere. I resi devono essere preventivamente autorizzati dalla ditta ed effettuati in porto franco. Nel caso pervengano colli palesemente danneggiati, si raccomanda la firma con riserva del documento di accompagnamento.

- I modelli del nostro catalogo sono stati ideati da ARIZZI MARIO E FIGLI & C. e costruiti in Italia. Gran parte di essi è registrata.
- I dati tecnici, i disegni, i colori riportati nel presente catalogo si intendono puramente indicativi. Nell'interesse del cliente, ARIZZI MARIO E FIGLI & C. si riserva di apportare tutte le modifiche e migliorie che riterrà necessarie senza l'obbligo di preavviso.
- Tutti i prodotti sono certificati CE, UL e GHOST, questi sono un marchio di garanzia che vengono rilasciati dopo una serie di rigorosi test di controllo e certificano la qualità del prodotto e la sua rispondenza ai parametri di sicurezza previsti dalle normative CE, UL e GHOST.
- Per qualsiasi controversia è sempre competente il Foro di Firenze, Italia anche se il contratto è stato stipulato altrove.
- ARIZZI MARIO E FIGLI & C. non risponde per danni o cose causati dall'installazione degli apparecchi effettuata da persone non qualificate o dalla modifica delle caratteristiche tecniche e costruttive.
- È severamente vietata la riproduzione totale o parziale del presente catalogo senza l'autorizzazione di ARIZZI MARIO E FIGLI & C.

© Copyright by Arizzi Mario e figli & C. snc

Print:
Ditre Arti Grafiche
www.ditre.com

Finished printing:
July 2009



Arizzi Mario e figli & C. snc

Via B. Gozzoli, 25
50018 loc. Granatieri
Scandicci · Firenze · Italy
T +39 055 791093
+39 055 721359
F +39 055 721329
www.arizzi.it
arizzi@arizzi.it
info@arizzi.it